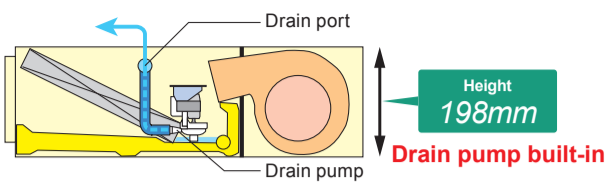


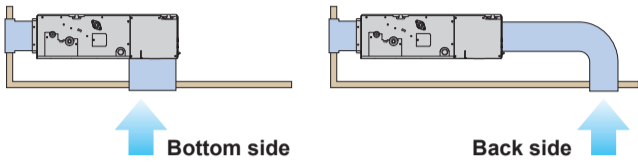
■ Slim design

With a slim indoor design, this indoor can be installed in narrow ceiling spaces.



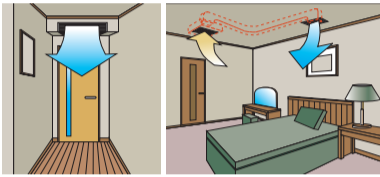
■ Air Intake

Air intake direction can be selected to match the installation site.

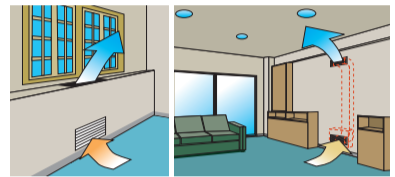


■ Flexible installation

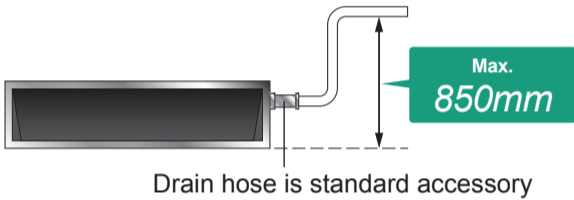
Ceiling concealed



Floor concealed

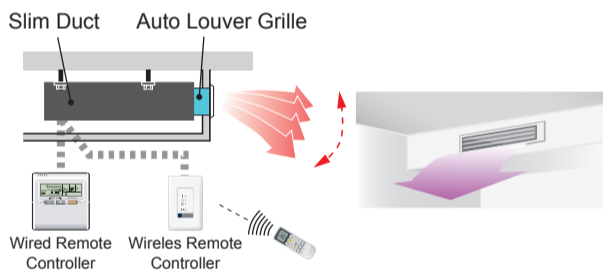


■ High lift drain pump



■ Auto Louver Grille Kit (Option)

Simple flat Auto Louver will provide comfort airflow and harmonize with luxury interior.



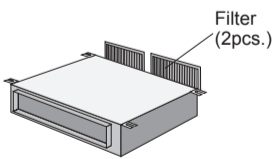
■ Selectable with a wide range of static pressure

By using DC fan motor, it is possible to change of static pressure range 0 to 90Pa.
The change of static pressure range is possible by remote controller.

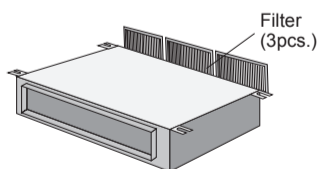


■ Filter (Accessory)

ARXD07 / 09 / 12 / 14 / 18

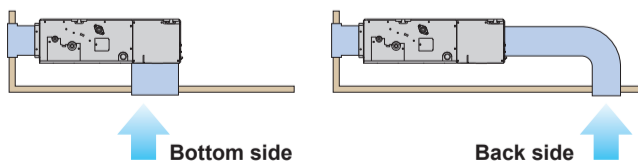


ARXD24



■ Air-intake

Air intake direction can be selected to match the installation site.



■ Optional parts

Remote Sensor Unit : UTY-XSZX
IR Receiver Unit : UTB-YWC
Auto Louver Grille Kit : UTD-GXSA-W (for ARXD07/09/12/14GALH)
UTD-GXSB-W (for ARXD18GALH)
UTD-GXSC-W (for ARXD24GALH)