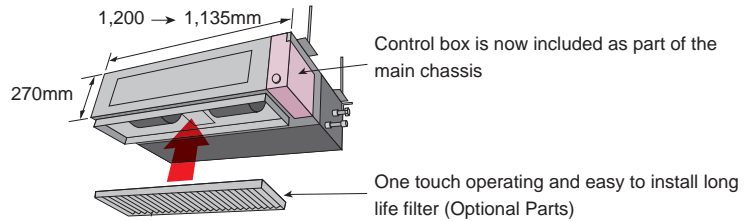
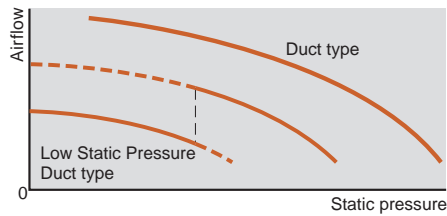


■ Slim & Compact design

In the case of bottom return air connection, not only does the indoor unit design allow for installation in a narrow ceiling space of up to 270mm, Further space savings have been achieved by mounting the electrical control box internally inside the chassis.



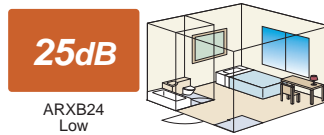
■ Line-up of low-noise and high-power models, compatible with a wide range of static pressure



Low Static Pressure Duct type

Optimum model for hotels or bedrooms

An ultra low-noise model that achieves a quiet interior. Perfect for hotels or bedrooms with limited air duct installation space. Two different levels can be selected according to the static pressure range.



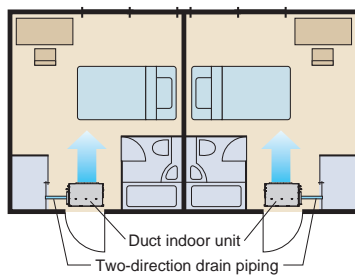
Duct type

Powerful model with a flexible design

With a powerful motor, appropriate for a wide range of static pressure. Flexible air duct installation is possible in a large space such as an office.



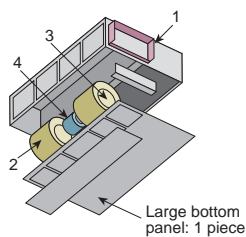
■ Two-direction drain piping



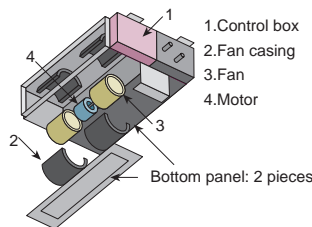
■ Easy maintenance

See below for the case of rear suction type

Previous model



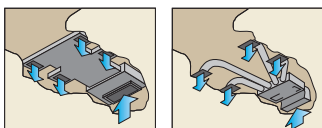
New model



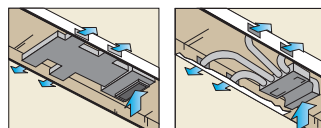
Structural improvement is attained by making the bottom panel two pieces, front and rear. The internal fan casing is also manufactured in two pieces, namely upper and lower. The maintenance of the motor and fan can be easily carried out by removing the rear panel and the lower part of the casing while leaving the main chassis installed.

■ Installation styles

Embedded in Ceiling



Hanging from Ceiling



■ Optional parts

Remote Sensor Unit : UTD-RS100

Long Life Filter : UTD-LF25NA

Flange (Square) : UTD-SF045T

*WB : YWB, TWB

Flange (Round) : UTD-RF204

IR Receiver Unit : UTB-*WB

Drain Pump Unit : UTZ-PX1NBA